

UNIT, DIRECT SUPPORT, AND GENERAL SUPPORT MAINTENANCE
REPAIR PARTS AND SPECIAL TOOLS LIST
TRUCK, 5-TON, 6X6, M809 SERIES TRUCKS (DIESEL)

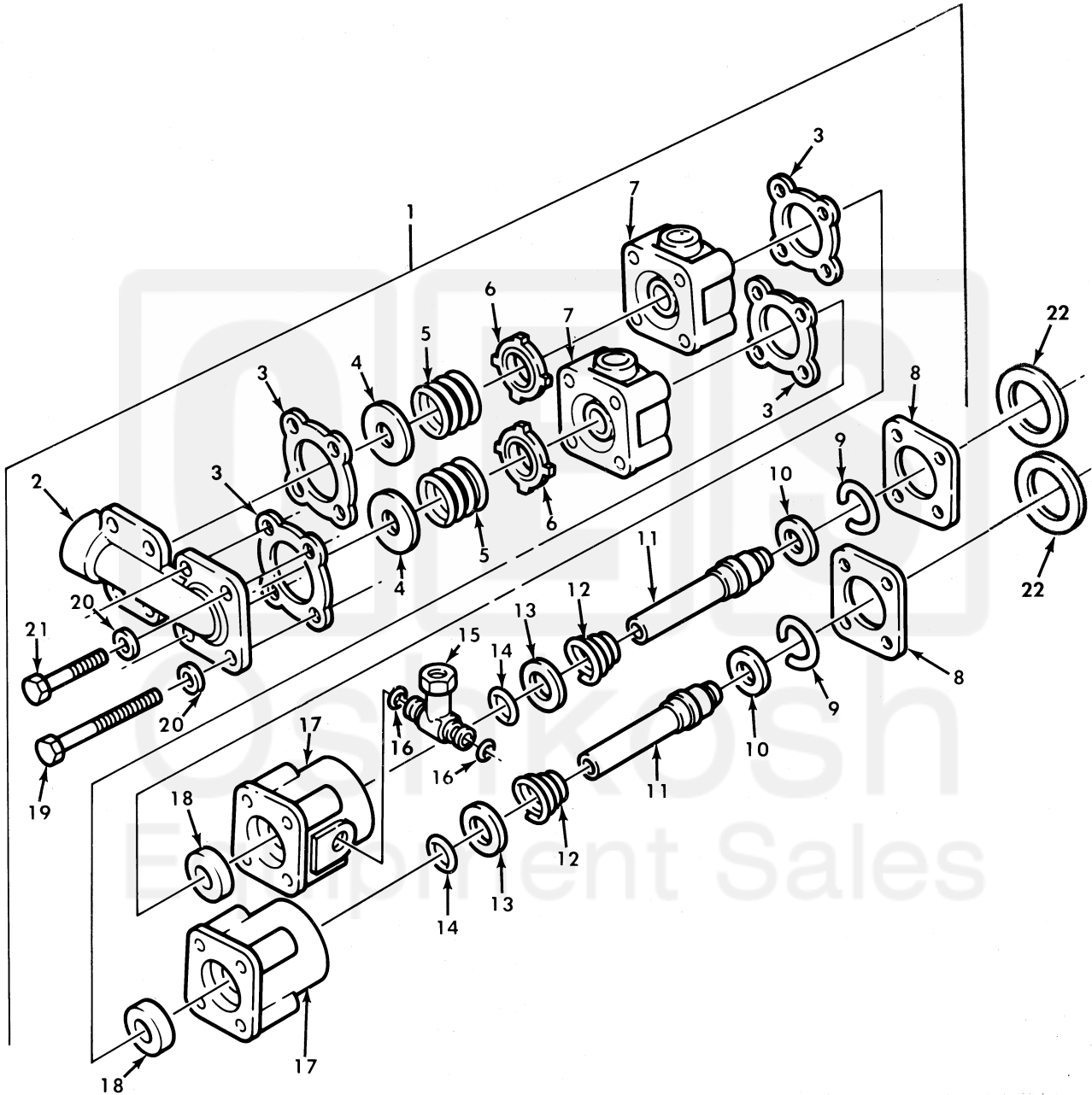


Figure 137. Transmission Twin Poppet Valve Assembly.

(1) ITEM NO	(2) SMR CODE	(3) NSN	(4) CAGEC	(5) PART NUMBER	(6) DESCRIPTION AND USABLE ON CODE (UOC)	(7) QTY
GROUP 0704 TRANSMISSION TOP COVER ASSEMBLY						
FIG. 137 TRANSMISSION TWIN POPPET VALVE ASSEMBLY						
1	PAFFF	4820-00-832-7013	19207	8327013	VALVE ASSY TWIN POP.....	1
2	PAFZZ	2520-01-164-9274	19207	8327108	. PLUG, PIPE AIR.....	1
3	PAFZZ	5330-00-413-8953	19207	8327106	. GASKET.....	4
4	PAFZZ	5310-01-120-1443	19207	7335538	. WASHER, FLAT.....	2
5	PAFZZ	5360-00-424-1513	40342	N10923	. SPRING, HELICAL, COMP.....	2
6	PAFZZ	5330-00-133-6238	19207	7335537	. PACKING WITH RETAIN.....	2
7	PAFZZ	4820-00-353-1982	19207	8327020	. BODY, POPPET VALVE.....	2
8	PAFZZ	5330-00-832-7103	19207	8327103	. GASKET.....	2
9	PAFZZ	5325-00-134-3356	19207	8327101	. RING, RETAINING.....	2
10	PAFZZ	5310-01-119-9356	19207	8327100	. WASHER, FLAT.....	2
11	PAFZZ	3810-00-353-1983	40342	N10801	. PLUNGER AND BALL AS.....	2
12	PAFZZ	5360-00-699-8471	19207	8329525	. SPRING, HELICAL, COMP.....	2
13	XDFZZ		19207	7335539	. WASHER, FLAT.....	2
14	PAFZZ	5331-00-248-3838	96906	MS29513-013	. O-RING.....	2
15	PAFZZ	4730-00-832-7107	40342	N12945A	. TEE, PIPE TO HOSE.....	1
16	PAFZZ	5331-00-248-3836	96906	MS29513-012	. O-RING.....	2
17	PAFZZ	2520-00-832-7019	19207	8327019	. BODY SHIFT SCREW.....	2
18	PAFZZ	5330-00-104-0004	19207	12300544	. SEAL, PLAIN ENCASED.....	2
19	PAFZZ	5305-00-071-2514	80204	B1821BH025C275N	. SCREW, CAP, HEXAGON H.....	4
20	PAFZZ	5310-00-550-1130	96906	MS35333-40	. WASHER, LOCK.....	8
21	PAFZZ	5305-00-267-8957	80204	B1821BH025F175N	. SCREW, CAP, HEXAGON H.....	4
22	PAFZZ	5331-00-579-7914	96906	MS28775-217	O-RING.....	2

END OF FIGURE

